
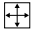


Progress

- Gres Porcellanato • Porcelain Stoneware • Grès Cérame Émaillé • Feinsteinzeug • Gres Porcelánico • Керамогранит

 **Naturale/Matt**
60x60 · 30x60

Rettificato Monocalibro • Rectified Monocaliber
• Calibre Unique • Rektifiziert Monokaliber •
Rectificado Monocalibre • Ректифицированный
Монокалиберный

 **Naturale/Matt**
45x45 · 33,3x33,3



Pendulum
Classe 1



抗磨性水平: A 类

PAG. 437

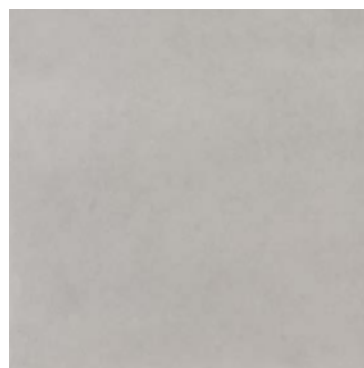
Conforme • According to • Conforme •
Gemäß • Conforme • Соответствует
UNI EN 14411 - G Bla

Rivestimenti Coordinati • Coordinated Wall
Tiles • Passende Wandfliesen • Revêtements
Coordonnés • Revestimientos Coordinados •
Настенная Плитка Скоординированные
Progress pag. 414



Beige

G



Gray

G



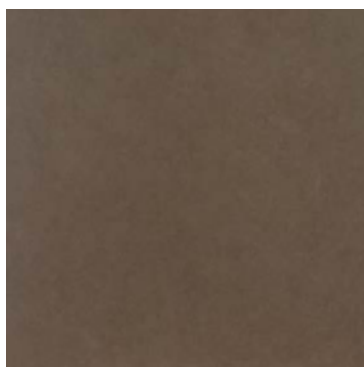
Hazelnut

G



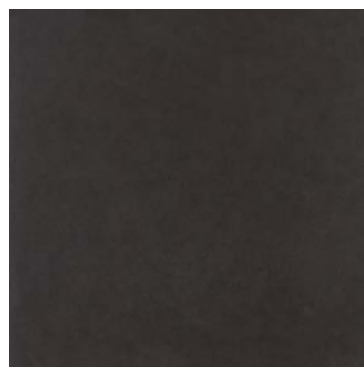
Anthracite

F



Brown

F

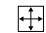


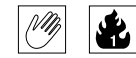
Black

F

Progress

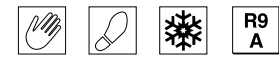
- Monoporosa • Porous Single Firing • Monoporeuse • Poröse Einbrandfliese • Monoporosa • Монопороза
 - Gres Porcellanato • Porcelain Stoneware • Grès Cérame Émaillé • Feinsteinzeug • Gres Porcelánico • Керамогранит

 **Matt**
25x38



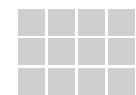
Conforme • According to • Conforme •
 Gemäß • Conforme • Соответствует
UNI EN 14411 - L BIII

 **Matt**
10x10 Modul

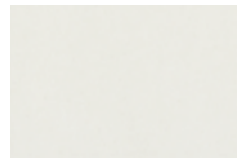


Conforme • According to • Conforme •
 Gemäß • Conforme • Соответствует
UNI EN 14411 - G BIIa

Formati • Sizes • Formats • Formate •
 Formatos • Форматы



10x10 Modul



DH03
Progress White 25x38



MLLY
Progress Beige 25x38



MLLZ
Progress Hazelnut 25x38



MLM0
Progress Brown 25x38



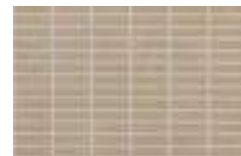
MLM1
Progress Gray 25x38



MLM2
Progress Anthracite 25x38



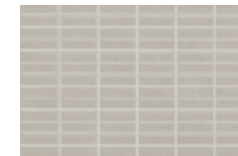
MLM4
Mosaico 25x38 (4)



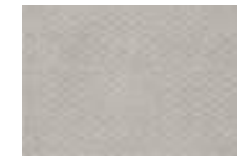
MLM5
Mosaico 25x38 (4)



MLM6
Mosaico 25x38 (4)



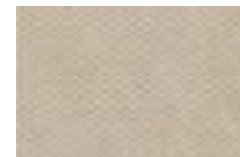
MLM7
Mosaico 25x38 (4)



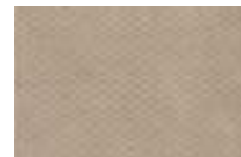
MLMK
Decoro 25x38 (4)



MLM8
Mosaico 25x38 (4)



MLMH
Mosaico 25x38 (4)



MLMJ
Mosaico 25x38 (4)



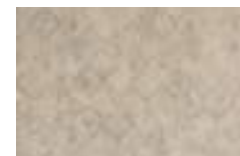
MLPQ
Decoro 25x38



MLPN
Decoro 25x38



MLML
Decoro 25x38



MLPP
Decoro 25x38

Rif. Gray / Anthracite / Black

MLPS
Listello 3x38

MLPU
Listello 4,5x25



MLPM
Decoro 25x38

Rif. Beige / Hazelnut / Brown

MLPR
Listello 3x38



MLPT
Listello 4,5x25



M7YR
Progress Brown P.C. 10x10



M7YT
Progress Gray P.C. 10x10



M7YU
Progress Anthracite P.C. 10x10





M7YV
Progress Black P.C. 10x10

Progress

- Monoporosa • Porous Single Firing • Monoporeuse • Poröse Einbrandfliese • Monoporosa • Монопороза
 - Gres Porcellanato • Porcelain Stoneware • Grès Cérame Émaillé • Feinsteinzeug • Gres Porcelánico • Керамогранит

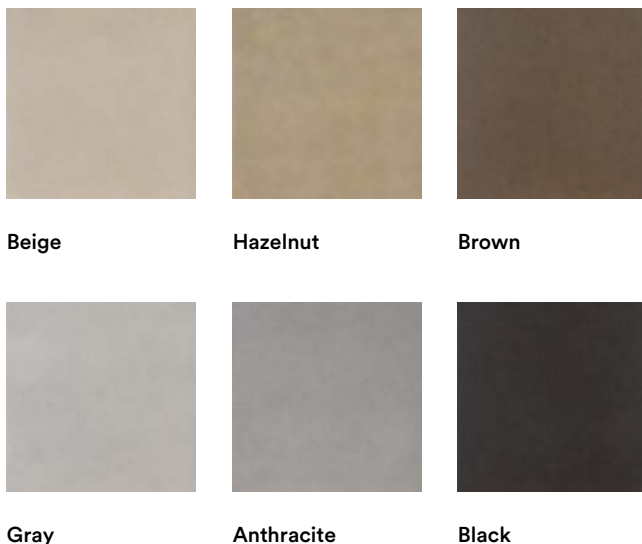
Pavimenti Coordinati • Matching Floor Tiles • Carreaux de Sol Assortis • Koordinierte-Bodenbeläge •
 Pavimentos Coordinados • Координированные Полы

 **Naturale/Matt**
 60x60 · 30x60
 Rettificato Monocalibro • Rectified Monocaliber • Calibre Unique • Rektifiziert Monokaliber • Rectificado Monocalibre • Ректифицированный Монокалиберный

 **Naturale/Matt**
 45x45 · 33,3x33,3






Conforme • According to • Conforme •
 Gemäß • Conforme • Соответствует
UNI EN 14411 - G Bla



Formati • Sizes • Formats • Formate • Formatos • Форматы

60x60 Rett.	45x45	30x60 Rett.	33,3x33,3
MKL2 Progress Beige Rett.	ML9S Progress Beige	MKSU Progress Beige Rett.	MJMH Progress Beige
MKL3 Progress Hazelnut Rett.	ML9T Progress Hazelnut	MKSV Progress Hazelnut Rett.	MJMJ Progress Hazelnut
MKL4 Progress Brown Rett.	ML9U Progress Brown	MKSW Progress Brown Rett.	MJMK Progress Brown
MKL5 Progress Gray Rett.	ML9V Progress Gray	MKSX Progress Gray Rett.	MJML Progress Gray
MKL6 Progress Anthracite Rett.	ML9W Progress Anthracite	MKSY Progress Anthracite Rett.	MJMM Progress Anthracite
MKL7 Progress Black Rett.	ML9X Progress Black	MKSZ Progress Black Rett.	MJMN Progress Black

Imballi Packing Verpackungen Emballages Embalajes Упаковки							Spessore Thickness Stärke Epaisseur Espesor Толщина				
	Pezzi Pieces Stek Pièces Piezas Штуки	Mq Sq. Mt Qm Mq Mq Кв. м	Kg Kr	Scatole Box Karton Boite Caja Коробки	Mq Sq. Mt Qm Mq Mq Кв. м	Kg Kr		Pezzi Pieces Stek Pièces Piezas Штуки	Mq Sq. Mt Qm Mq Mq Кв. м	Kg Kr	
25x38	14	1,33	19,44	54	71,82	1.067,63	8,5	25x38 Decoro	4	0,38	5,48
25x38 Mosaico	14	1,33	19,44	54	71,82	1.067,63	8,5	3x38 Listello	6	0,07	0,99
25x38 Decoro (MLMH-MLMJ-MLMK-MLML)	14	1,33	19,44	54	71,82	1.067,63	8,5	4,5x25 Listello	6	0,07	0,97
10x10 Modul P.C.	96	1,00	15,46	66	66,02	1.020,42	7,0				
60x60 Rettificato	3	1,08	25,54	40	43,20	1.021,62	9,0				
30x60 Rettificato	6	1,08	20,72	48	51,84	994,39	9,0				
45x45	5	1,01	20,72	33	33,41	683,88	9,0				
33,3x33,3	16	1,77	29,71	38	67,42	1.129,14	8,0				