

ABSOLUTE



hall
MARINER GRES

ORIGINAL TEXTURES

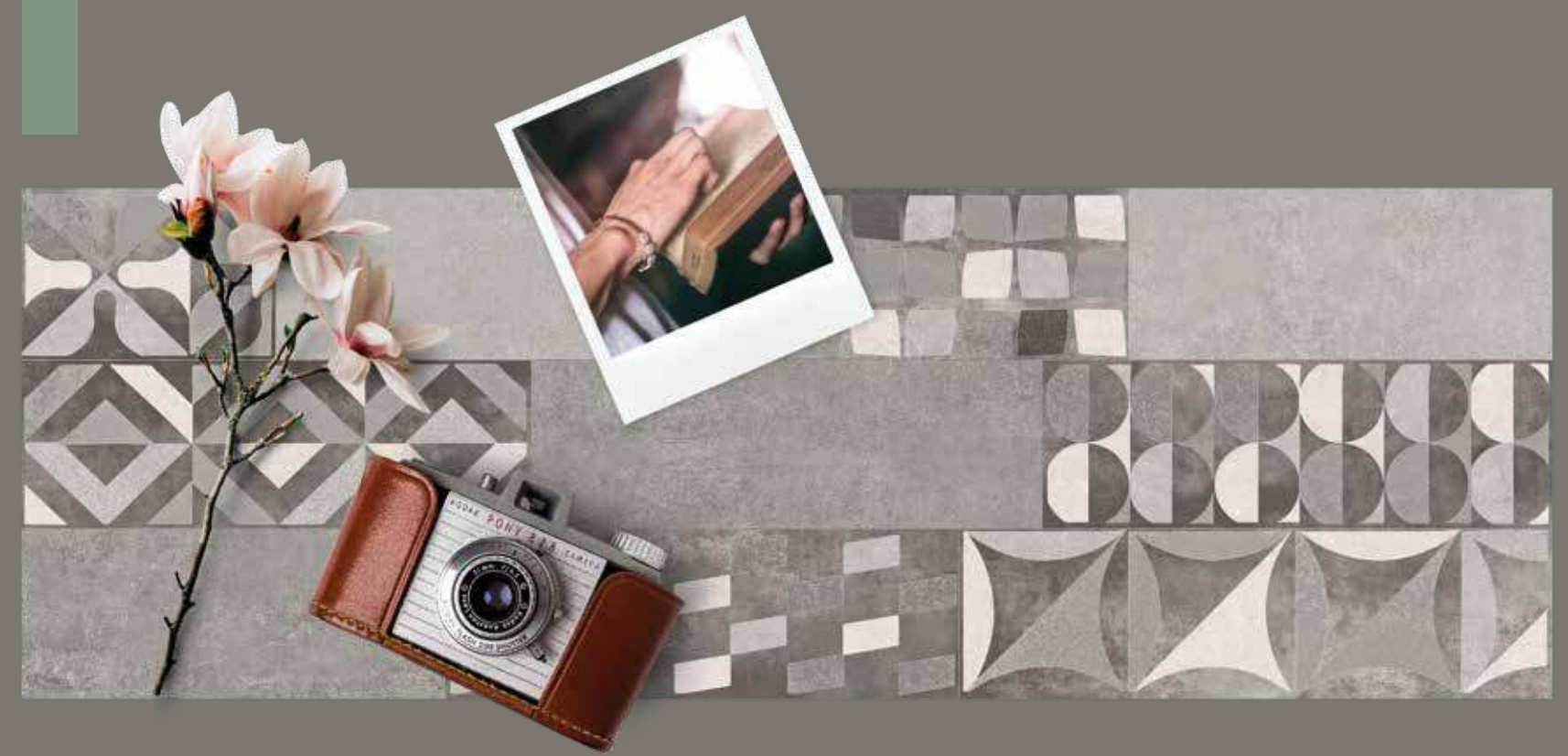
LA COLLEZIONE ABSOLUTE E' UN CONNUBIO PERFETTO TRA PASSATO E PRESENTE. CARATTERIZZATA DA DECORI RICCHI DI DETTAGLI BRILLANTI E CONTRASTI MATERICI CHE CREANO AMBIENTI PIENI DI SFUMATURE.

ABSOLUTE RANGE IS A PERFECT BLEND OF PAST AND PRESENT. MARKED BY BRILLIANT DETAILS AND TEXTURED CONTRASTS, WHICH CREATE FULL-OF-NUANCES LOCATIONS.





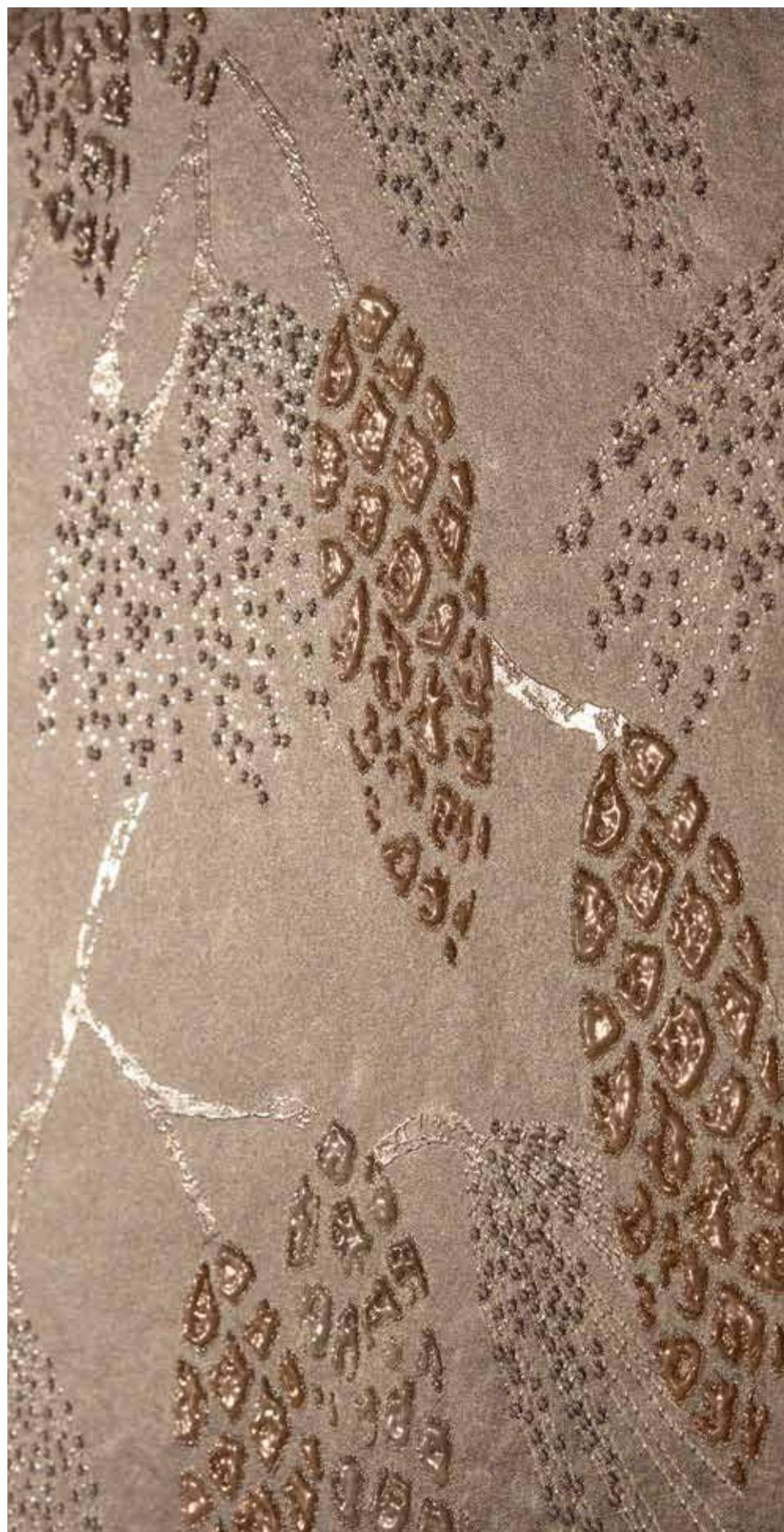
LIVING LOFT





MURETTO SILVER
30x90

DECORO PINE TAUPE
30x90



07

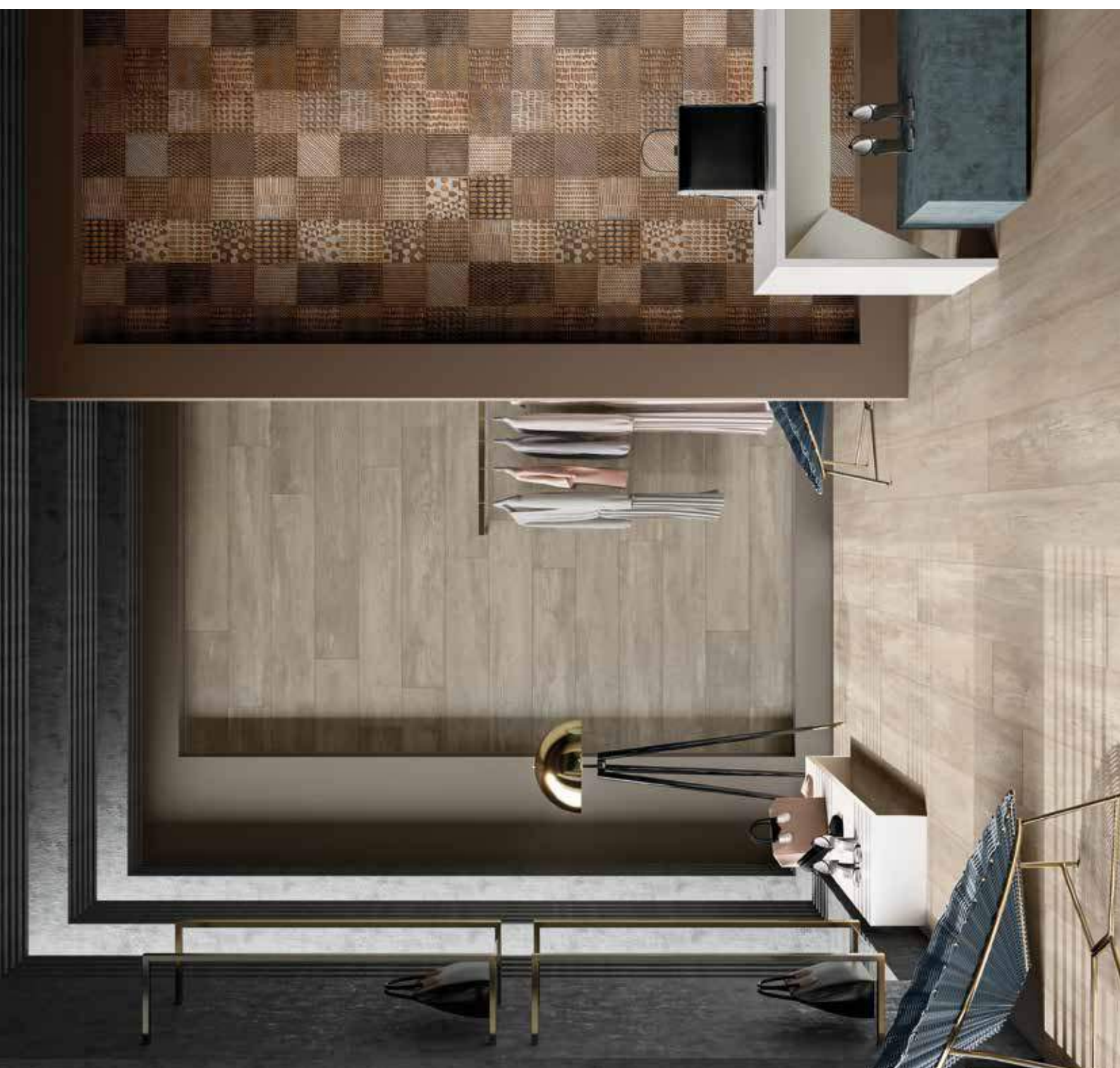
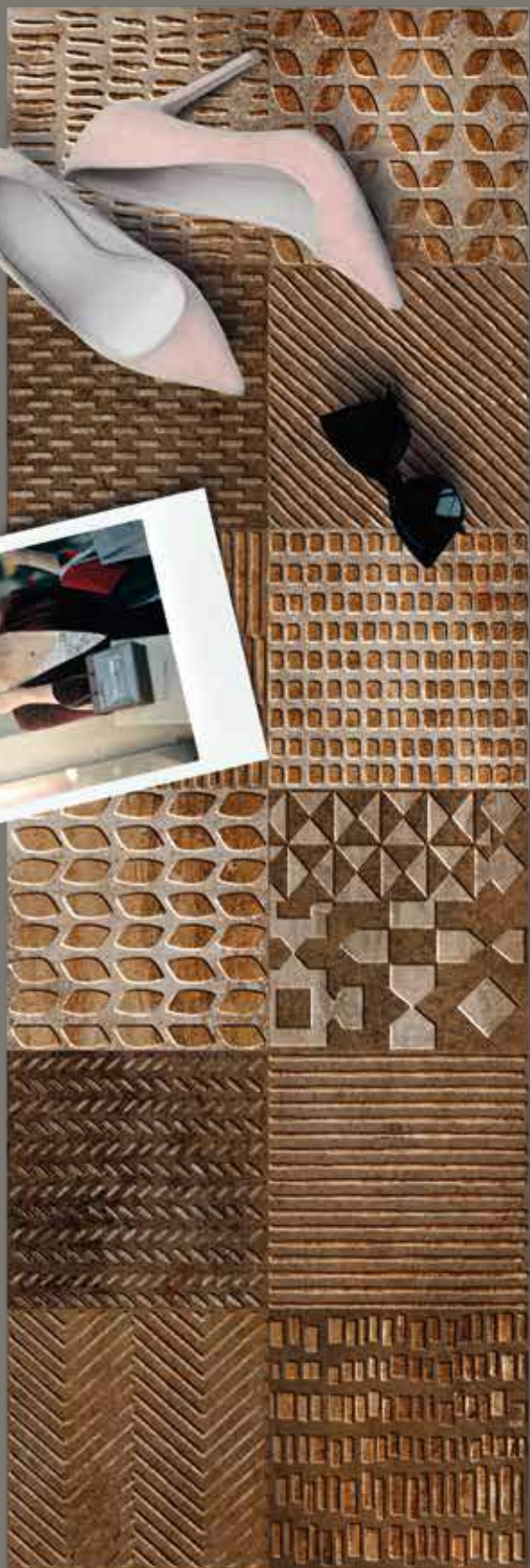


06

RIGHE EARTH
30x90



URBAN STYLE



WALL: Absolute Decoro Corten 30x90 cm | Absolute Wood Taupe 20x120 cm
FLOOR: Absolute Wood Ivory 20x120 cm

DECORO CORTEN
30x90





WALL: Absolute Decoro Pine Grey 30x90 cm 15



WALL: Absolute Decoro Pine Grey 30x90 cm | Absolute Grey 30x90 cm



DECORO PINE GREY
30x90



RESIDENTIAL KITCHEN



ABSOLUTE

GRES PORCELLANATO – RETTIFICATO / PORCELAIN STONEWARE – RECTIFIED
30x90 cm 12"x36" | Spessore / Thickness 8 mm / 0.31"



AB3090IV Absolute Ivory
30x90 cm / 12"x36"



AB3090TA Absolute Taupe
30x90 cm / 12"x36"



AB3090IC Absolute Ice
30x90 cm / 12"x36"



AB3090GY Absolute Grey
30x90 cm / 12"x36"



AB3090EAR Absolute Righe Earth
30x90 cm / 12"x36"



AB3090TED Absolute Decoro Tetrys
30x90 cm / 12"x36" (3 soggetti)

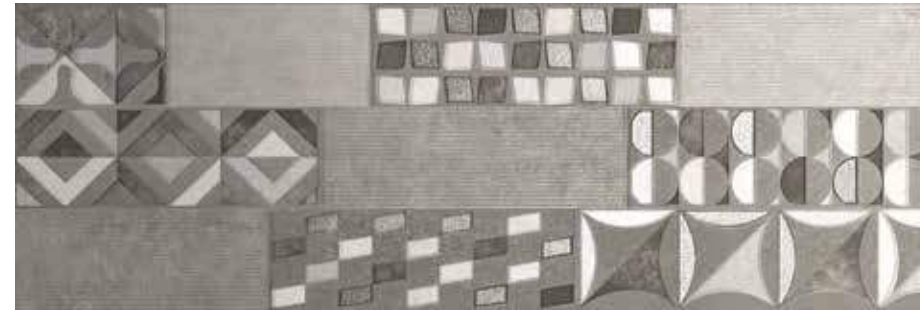
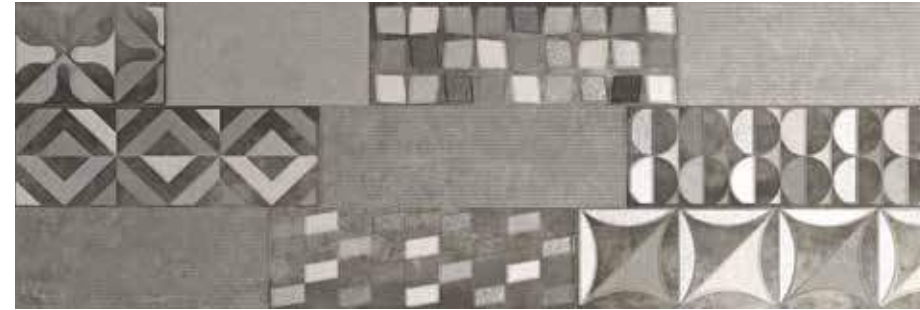
ABSOLUTE

GRES PORCELLANATO – RETTIFICATO / PORCELAIN STONEWARE – RECTIFIED
30x90 cm 12"x36" | Spessore / Thickness 8 mm / 0.31"



AB3090COD Absolute Decoro Corten
30x90 cm / 12"x36" (2 soggetti)

147



AB3090SIM Absolute Muretto Silver
30x90 cm / 12"x36"

147



ABPINTA Absolute Decoro Pine Taupe
30x90 cm / 12"x36"

180



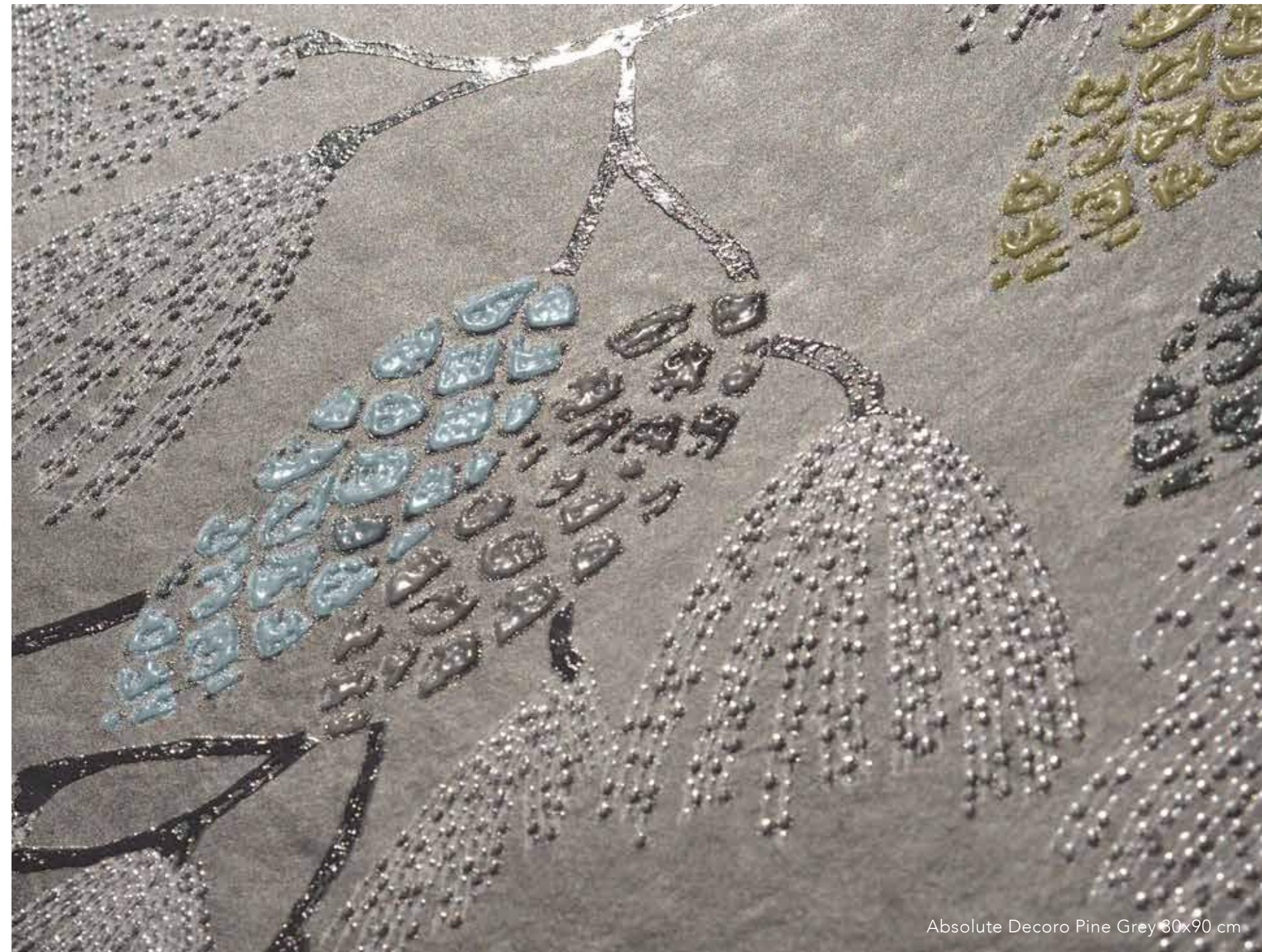
ABPINGY Absolute Decoro Pine Grey
30x90 cm / 12"x36"

180

| FORMATO SIZE | SPESORE THICKNESS | PEZZI/COLLO PIECES/BOX | MQ/COLLO SQM/BOX | KG/COLLO KG/BOX | COLLI/PALLET BOX/EUROPAL | MQ/PALLET SQM/EUROPAL | KG/PALLET KG/EUROPAL | DIMENSIONE PALLET EUROPAL SIZE | FASCIA PREZZO PROCE RANGE |
|----------------------|----------------------|---------------------------|---------------------|--------------------|-----------------------------|--------------------------|-------------------------|-----------------------------------|------------------------------|
| 30x90 Rettificato | 8 mm | 5 | 1,35 | 23,50 | 48 | 64,80 | 1128,00 | 1210x930mm | 146 |
| 30x90 Decoro Tetrys | 8 mm | 5 | 1,35 | 23,50 | 48 | 64,80 | 1128,00 | 1210x930mm | 147 |
| 30x90 Righe Earth | 8 mm | 5 | 1,35 | 23,50 | 48 | 64,80 | 1128,00 | 1210x930mm | 147 |
| 30x90 Decoro Corten | 8 mm | 5 | 1,35 | 23,50 | 48 | 64,80 | 1128,00 | 1210x930mm | 147 |
| 30x90 Muretto Silver | 8 mm | 5 | 1,35 | 23,50 | 48 | 64,80 | 1128,00 | 1210x930mm | 147 |
| 30x90 Decoro Pine | 8 mm | 4 | 1,08 | - | - | - | - | - | 180 * |

* Prezzo al pezzo - vendita tassativa a scatole complete | Price at piece - sale in full boxes only

| CARATTERISTICA TECNICA TECHNICAL FEATURE | NORMA NORM | ABSOLUTE 30x90 |
|---|---|--|
| LUNGHEZZA E LARGHEZZA LENGTH AND WIDTH | | CONFORME IN ACCORDANCE |
| SPESSORE THICKNESS | | CONFORME IN ACCORDANCE |
| RETTILINEITÀ SPIGOLI STRAIGHTNESS OF SIDES | UNI EN ISO 10545-2 | CONFORME IN ACCORDANCE |
| ORTOGONALITÀ RECTANGULARITY | | CONFORME IN ACCORDANCE |
| PLANARITÀ SURFACE FLATNESS | | CONFORME IN ACCORDANCE |
| ASPETTO ASPECT | | CONFORME IN ACCORDANCE |
| ASSORBIMENTO D'ACQUA WATER ABSORPTION | UNI EN ISO 10545-3 | ≤ 0,5% |
| RESISTENZA A FLESSIONE FLEXURAL STRENGTH | UNI EN ISO 10545-4 | ≥ 35 N/mm² |
| MODULO DI ROTTURA BREAKING STRENGTH | | ≥ 1300 N |
| DETERMINAZIONE DELLA RESISTENZA ALL'URTO DETERMINATION OF IMPACT RESISTANCE | UNI EN ISO 10545-5 | 0,90 |
| RESISTENZA ALL'ABRASIONE (METODO PEI) ABRASION RESISTANCE (PEI-METHOD) | UNI EN ISO 10545-7 | DA 3 A 5 IN BASE AL COLORE FROM 3 TO 5, ACCORDING TO COLOR |
| COEFFICIENTE DI DILATAZIONE TERMICA LINEARE THERMAL EXPANSION COEFFICIENT | UNI EN ISO 10545-8 | (5,7+5,9) X 10⁻⁶/°C |
| RESISTENZA AGLI SBALZI TERMICI THERMAL SHOCK RESISTANCE | UNI EN ISO 10545-9 | RESISTENTE RESISTANT |
| DETERMINAZIONE DELLA DILATAZIONE DOVUTA ALL'UMIDITÀ DETERMINATION OF MOISTURE EXPANSION | UNI EN ISO 10545-10 | 0,0 mm/m |
| DETERMINAZIONE DELLA RESISTENZA AL CAVILLO DETERMINATION OF CRAZING RESISTANCE | UNI EN ISO 10545-11 | RESISTENTE RESISTANT |
| RESISTENZA AL GELO FROST RESISTANCE | UNI EN ISO 10545-12 | INGELIVO FROST-RESISTANT |
| RESISTENZA AGLI AGENTI CHIMICI RESISTANCE TO CHEMICALS | UNI EN ISO 10545-13 | MINIMO CLASSE B MINIMUM CLASS B |
| RESISTENZA ALLE MACCHIE STAIN RESISTANCE | UNI EN ISO 10545-14 | MINIMO CLASSE 3 MINIMUM CLASS 3 |
| RESISTENZA ALLO SCIVOLAMENTO SLIP RESISTANCE | DIN 51130 C.o.F B.C.R./D.M. 236 14/6/89 D.C.o.F / ANSI A326.3 | R9 μ >0,40 >0,42 |
| REAZIONE AL FUOCO REACTION TO FIRE | 96/603/CE | A1_{FL}/A1 |
| GRADO DI VARIAZIONE CROMATICA AESTHETIC CLASSES | ANSI A137.1 | V2 |



Absolute Decoro Pine Grey 30x90 cm

