

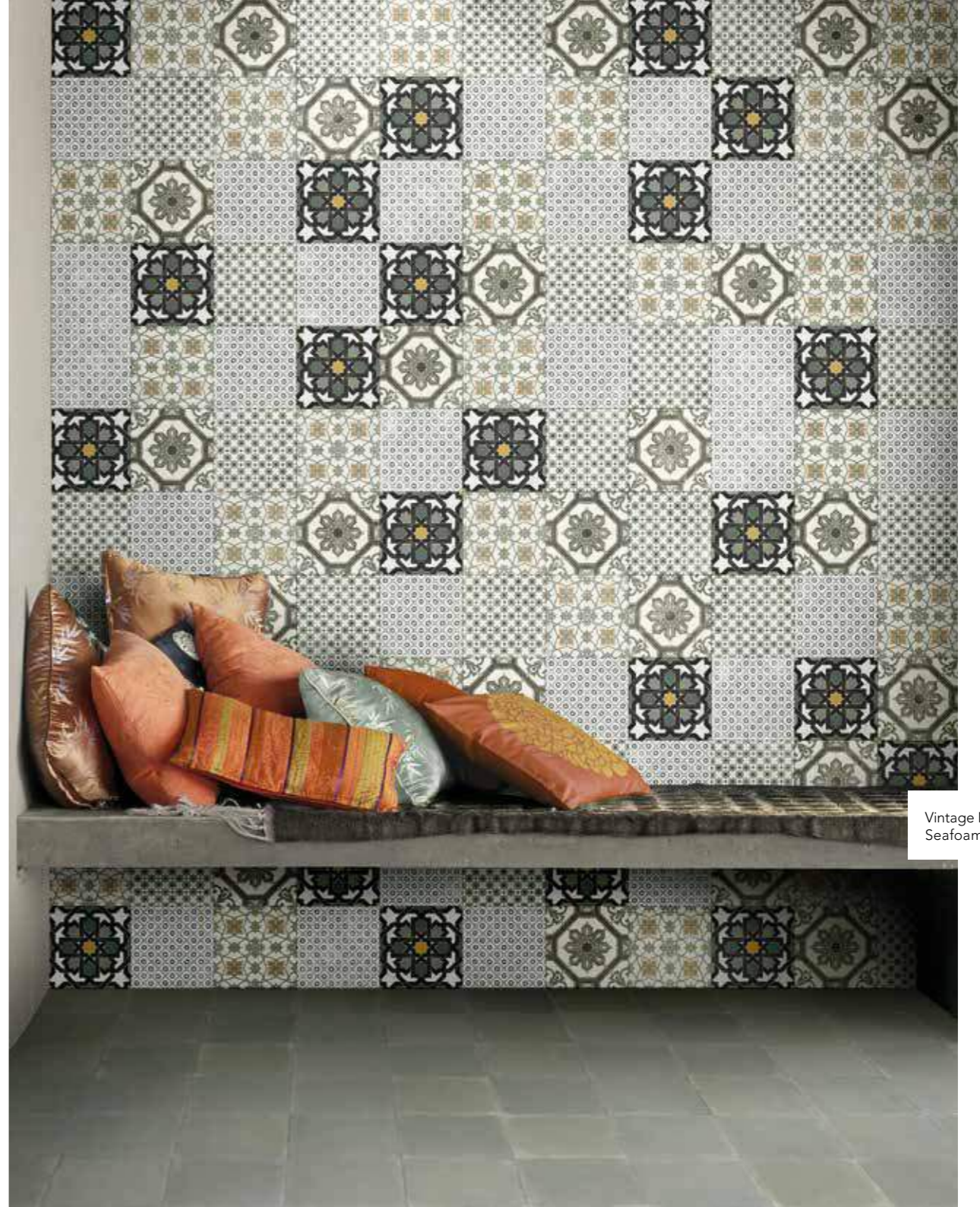
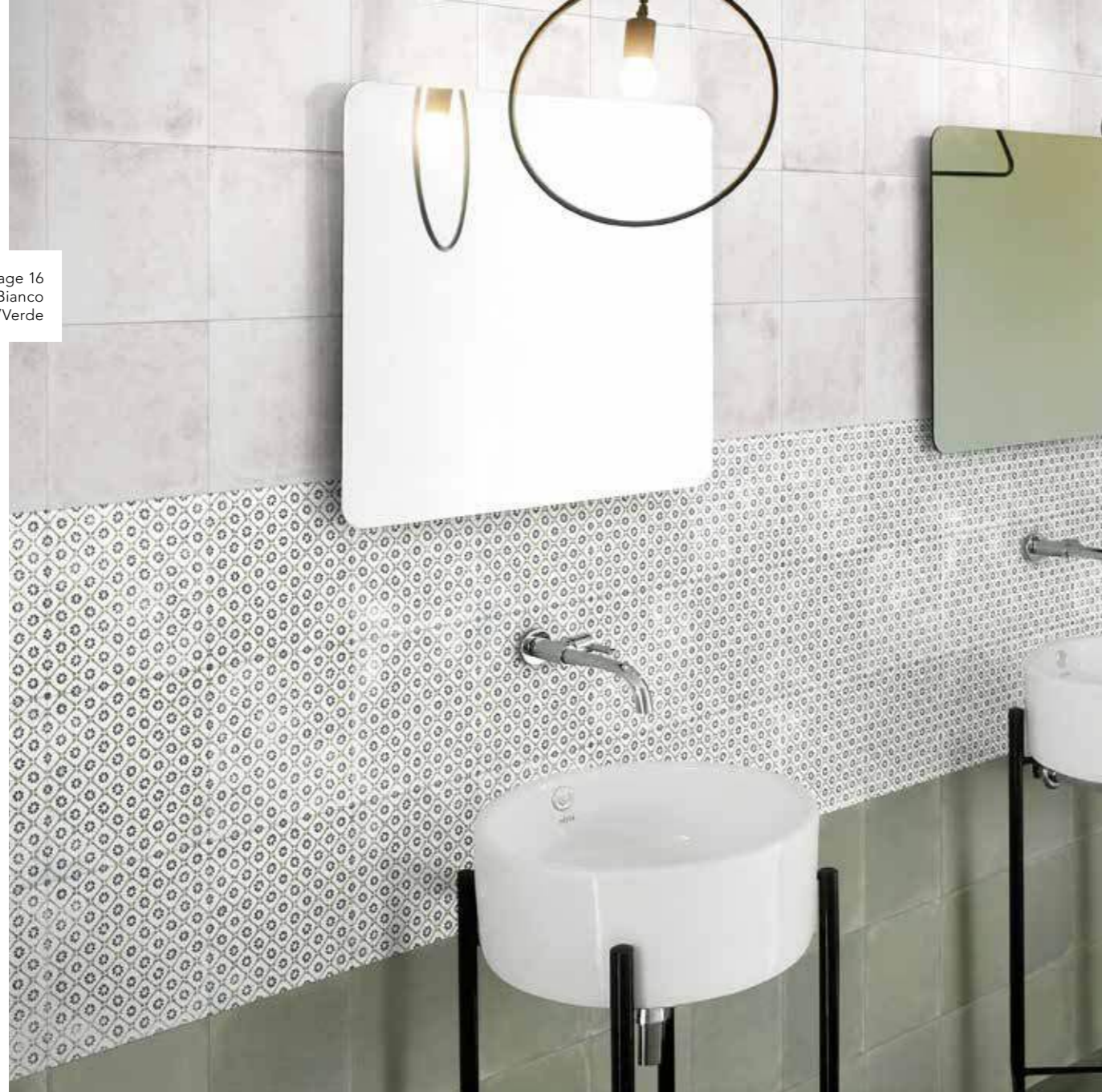
MARINER

VINTAGE



V₂

Vintage 16
Cloudy White/Bianco
Seafoam Green/Verde



Vintage Mix Verde
Seafoam Green/Verde

Vintage 15
Cloudy White/Bianco
Carbon Black/Nero



VINTAGE

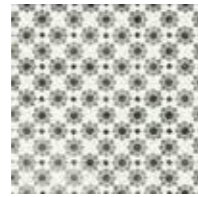
20X20 8"X8" GRES PORCELLANATO SMALTATO GLAZED PORCELAIN TILE
SPESSORE 9,5 mm THICKNESS 0.38" INK JET DIGITAL TECHNOLOGY



20x20 8"x8" **148**
VIN15 Vintage 15



20x20 8"x8" **148**
VIN16 Vintage 16



20x20 8"x8" **148**
VIN17 Vintage 17



20x20 8"x8" **148**
VIN18 Vintage 18



20x20 8"x8" **148**
VIN19 Vintage 19

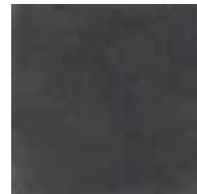


20x20 8"x8" **148**
VINMIXVE Vintage Mix Verde
(5 soggetti mix)

fondi field tile



20x20 8"x8" **145**
VINBI Cloudy White / Bianco



20x20 8"x8" **145**
VINNE Carbon Black / Nero



20x20 8"x8" **145**
VINVE Seafoam Green / Verde

	pcs/box	mq/box	kg/box	box/pallet	mq/pallet	kg/pallet
20x20 8"x8" Vintage	26	1,04	20,90	64	66,56	1337,60



Vintage 19
Seafoam Green/Verde

NORMA DI RIFERIMENTO SPECIFICATION REFERENCE EN 14411 appendice G Bla GL

CARATTERISTICHE TECNICHE TECHNICAL FEATURES	NORMA STANDARD	VALORE PRESCRITTO VALUE REQUIRED	VINTAGE
DIMENSIONI - SIZE			
ASSORBIMENTO ACQUA IN % % WATER ABSORPTION	EN ISO 10545/3 ASTM C 373	≤ 0,5 %	CONFORME COMPLY
RESISTENZA AGLI SBALZI TERMICI THERMAL SHOCKS RESISTANT	EN ISO 10545/9	NESSUNA ALTERAZIONE VISIBILE - NO VISIBLE ALTERATION / UNAFFECTED	CONFORME COMPLY
RESISTENZA AL GELO FROST/FREEZE RESISTANCE	EN ISO 10545/12	NESSUNA ALTERAZIONE VISIBILE - NO VISIBLE ALTERATION / UNAFFECTED	CONFORME COMPLY
RESISTENZA AGLI AGENTI CHIMICI A BASSA CONCENTRAZIONE CHEMICAL AGENTS RESISTANCE AT LOW CONCENTRATION	EN ISO 10545/13	VALORE DA DICHIARARE VALUE TO BE DECLARED	GLA
	ASTM C 650	CLASS A - CLASS E	CLASS A
RESISTENZA AI PRODOTTI CHIMICI DI USO DOMESTICO E AGLI ADDITIVI PER PISCINA - RESISTANCE TO DOMESTIC CHEMICAL PRODUCTS AND ADDITIVES FOR SWIMMING POOLS	EN ISO 10545/13	MINIMO GB MINIMUM GB	GA
RESISTENZA ALLO SCIVOLAMENTO SLIP RESISTANCE (ANTI-SLIP)	DCOF (ANSI A 137.1)	≥ 0,42	CONFORME COMPLY
RESISTENZA ALL'ABRASIONE ABRASION RESISTANCE	EN ISO 10545/7	VALORE DA DICHIARARE VALUE TO BE DECLARED	da 2 a 5 in base al colore from 2 to 5 according to color
RESISTENZA ALLA FLESSIONE (N/mm ²) FLEXURAL STRENGTH TEST (N/mm ²)	EN ISO 10545/4	SPESSORE ≤ 7,5 mm THICKNESS ≤ 7,5 mm	≥ 700 N
		SPESSORE ≥ 7,5 mm THICKNESS ≥ 7,5 mm	≥ 1300 N
	ASTM C 648	AVERAGE ≥ 250 lbf INDIVIDUAL ≥ 225 lbf	CONFORME COMPLY
RESISTENZA ALLE MACCHIE STAIN RESISTANCE	EN ISO 10545/14	≥ CLASSE 3	CONFORME COMPLY
	ASTM C 1378	CLASS A - CLASS E	CLASS A
GRADO DI VARIAZIONE CROMATICA AESTHETIC CLASSES	ANSI A137.1	V0 - V4	V3



MARINER

©2019 CERAMICHE MARINER S.P.A. Via Michelangelo 22, 42014 Castellarano (RE) Italia
Telefono +39 0536 858266 Fax +39 0536 859779 info@cermariner.it www.cermariner.it